

STATE OF WASHINGTON - DEPARTMENT OF TRANSPORTATION
 T R I P S S Y S T E M
 SHORT DURATION CLASSIFICATION 4-WAY

DATE: 09/12/2008
 TIME: 11:27:25
 PAGE: 1

SR 500 MP 005.98 OFF SYS ID COUNTER NUM 07843 COUNT ID HPMS
 DATE 08/28/2008 DAY OF WEEK 5 TIME PERIOD HOUR 06:00 - 10:00
 LOCATION SR 500 N/O NE 4TH PLAIN RD 04

ENTIRE COUNT VOLUMES

MOVEMENT	CARS AND PICKUPS	----SINGLE UNITS----	DOUBLE UNITS-	TRIPLE UNITS-	TOTAL TRUCK	PERCENT TRUCK	PERCENT TURNS	TOTAL
	BUS MED HVY 4+	4- 5 6+	5- 6 7+					
NORTH APPROACH	3650	4 120 24	33 17 38	1 1	241	6.19	100.00	3891
THIS LEG NORTH								
NORTH TO SOUTH								
NORTH TO EAST								
NORTH TO WEST								
SOUTH APPROACH	2247	2 102 21	18 15 20	1 1	181	7.45	100.00	2428
SOUTH TO NORTH								
THIS LEG SOUTH								
SOUTH TO EAST								
SOUTH TO WEST								
EAST APPROACH								
EAST TO NORTH								
EAST TO SOUTH								
THIS LEG EAST								
EAST TO WEST								
WEST APPROACH								
WEST TO NORTH								
WEST TO SOUTH								
WEST TO EAST								
THIS LEG WEST								

PCT SPLIT
 OUT/IN 6319

NORTH TOTAL	5897	6 222 45 5	51 32 58	1 1 2	422			62/38	6319
PERCENTAGE	93.32	0.09 3.51 0.71 0.08	0.81 0.51 0.92	0.02 0.02 0.03	6.68				
SOUTH TOTAL	5897	6 222 45 5	51 32 58	1 1 2	422			38/62	6319
PERCENTAGE	93.32	0.09 3.51 0.71 0.08	0.81 0.51 0.92	0.02 0.02 0.03	6.68				
EAST TOTAL									
PERCENTAGE									
WEST TOTAL									
PERCENTAGE									

TRUCK PERCENTAGE:

LEGS	S/U	%	D/U	%	TRAIN	%	TRUCK	%	AXLE FACTOR
NORTH TOTAL	278	4.40	141	2.23	3	0.05	422	6.68	0.9621
SOUTH TOTAL	278	4.40	141	2.23	3	0.05	422	6.68	0.9621
EAST TOTAL									
WEST TOTAL									

12638

STATE OF WASHINGTON - DEPARTMENT OF TRANSPORTATION
 T R I P S S Y S T E M
 SHORT DURATION CLASSIFICATION 4-WAY

DATE: 09/12/2008
 TIME: 11:27:25
 PAGE: 2

SR 500 MP 005.98 OFF SYS ID COUNTER NUM 07843 COUNT ID HPMS
 DATE 08/28/2008 DAY OF WEEK 5 TIME PERIOD HOUR 06:00 - 07:00
 LOCATION SR 500 N/O NE 4TH PLATIN RD 04

HOURLY VOLUMES

MOVEMENT	CARS AND PICKUPS	----SINGLE UNITS----				-DOUBLE UNITS-			-TRIPLE UNITS-		TOTAL TRUCK	PERCENT TRUCK	PERCENT TURNS	TOTAL
		BUS	MED	HVY	4+	4-	5	6+	5-	6				
NORTH APPROACH THIS LEG NORTH NORTH TO SOUTH NORTH TO EAST NORTH TO WEST	879		22	4		7	4	15			52	5.59	100.00	931
SOUTH APPROACH SOUTH TO NORTH THIS LEG SOUTH SOUTH TO EAST SOUTH TO WEST	406		11	3			2	3		1	20	4.69	100.00	426
EAST APPROACH EAST TO NORTH EAST TO SOUTH THIS LEG EAST EAST TO WEST														
WEST APPROACH WEST TO NORTH WEST TO SOUTH WEST TO EAST THIS LEG WEST														

PCT SPLIT
 OUT/IN
 1357

NORTH TOTAL PERCENTAGE	1285 94.69	33 2.43	7 0.52	7 0.52	6 0.44	18 1.33	1 0.07	72 5.31	69/31	1357
SOUTH TOTAL PERCENTAGE	1285 94.69	33 2.43	7 0.52	7 0.52	6 0.44	18 1.33	1 0.07	72 5.31	31/69	1357
EAST TOTAL PERCENTAGE										
WEST TOTAL PERCENTAGE										

2714

SR 500 MP 005.98 OFF SYS ID COUNTER NUM 07843 COUNT ID HPMS
 DATE 08/28/2008 DAY OF WEEK 5 TIME PERIOD HOUR 07:00 - 08:00
 LOCATION SR 500 N/O NE 4TH PLAIN RD 04

HOURLY VOLUMES

MOVEMENT	CARS AND PICKUPS	----SINGLE UNITS----				-DOUBLE UNITS-			-TRIPLE UNITS-			TOTAL TRUCK	PERCENT TRUCK	PERCENT TURNS	TOTAL
		BUS	MED	HVY	4+	4-	5	6+	5-	6	7+				
NORTH APPROACH THIS LEG NORTH NORTH TO SOUTH NORTH TO EAST NORTH TO WEST	993		35	7	1	8	4	10			1	66	6.23	100.00	1059
SOUTH APPROACH SOUTH TO NORTH THIS LEG SOUTH SOUTH TO EAST SOUTH TO WEST	613		28	6		6	5	5				50	7.54	100.00	663
EAST APPROACH EAST TO NORTH EAST TO SOUTH THIS LEG EAST EAST TO WEST															
WEST APPROACH WEST TO NORTH WEST TO SOUTH WEST TO EAST THIS LEG WEST															
NORTH TOTAL PERCENTAGE	1606 93.26		63 3.66	13 0.75	1 0.06	14 0.81	9 0.52	15 0.87			1 0.06	116 6.74		61/39	1722
SOUTH TOTAL PERCENTAGE	1606 93.26		63 3.66	13 0.75	1 0.06	14 0.81	9 0.52	15 0.87			1 0.06	116 6.74		39/61	1722
EAST TOTAL PERCENTAGE															
WEST TOTAL PERCENTAGE															

PCT SPLIT
 OUT/IN
 1722

3444

STATE OF WASHINGTON - DEPARTMENT OF TRANSPORTATION
 TRIP SYSTEM
 SHORT DURATION CLASSIFICATION 4-WAY

DATE: 09/12/2008
 TIME: 11:27:25
 PAGE: 4

SR 500 MP 005.98 OFF SYS ID COUNTER NUM 07843 COUNT ID HPMS
 DATE 08/28/2008 DAY OF WEEK 5 TIME PERIOD HOUR 08:00 - 09:00
 LOCATION SR 500 N/O NE 4TH PLAIN RD 04

HOURLY VOLUMES

MOVEMENT	CARS AND PICKUPS	----SINGLE UNITS----				-DOUBLE UNITS-			-TRIPLE UNITS-		-7+ UNITS-		TOTAL TRUCK	PERCENT TRUCK	PERCENT TURNS	TOTAL
		BUS	MED	HVY	4+	4-	5	6+	5-	6	7+					
NORTH APPROACH THIS LEG NORTH NORTH TO SOUTH NORTH TO EAST NORTH TO WEST	946	3	35	8	2	9	8	4	1			70	6.89	100.00	1016	
SOUTH APPROACH SOUTH TO NORTH THIS LEG SOUTH SOUTH TO EAST SOUTH TO WEST	572	2	31	7		5	5	7				57	9.06	100.00	629	
EAST APPROACH EAST TO NORTH EAST TO SOUTH THIS LEG EAST EAST TO WEST																
WEST APPROACH WEST TO NORTH WEST TO SOUTH WEST TO EAST THIS LEG WEST																
NORTH TOTAL PERCENTAGE	1518	5	66	15	2	14	13	11	1			127			1645	
SOUTH TOTAL PERCENTAGE	1518	5	66	15	2	14	13	11	1			127			1645	
EAST TOTAL PERCENTAGE	92.28	0.30	4.01	0.91	0.12	0.85	0.79	0.67	0.06			7.72			1645	
WEST TOTAL PERCENTAGE	92.28	0.30	4.01	0.91	0.12	0.85	0.79	0.67	0.06			7.72			1645	

PCT SPLIT
 OUT/IN 1645

3290

STATE OF WASHINGTON - DEPARTMENT OF TRANSPORTATION
 TRIP SYSTEM
 SHORT DURATION CLASSIFICATION 4-WAY

DATE: 09/12/2008
 TIME: 11:27:25
 PAGE: 5

SR 500 MP 005.98 OFF SYS ID COUNTER NUM 07843 COUNT ID HPMS
 DATE 08/28/2008 DAY OF WEEK 5 TIME PERIOD HOUR 09:00 - 10:00
 LOCATION SR 500 N/O NE 4TH PLAIN RD 04

MOVEMENT	CARS AND PICKUPS	---SINGLE UNITS---				-DOUBLE UNITS-			-TRIPLE UNITS-			TOTAL TRUCK	PERCENT TRUCK	PERCENT TURNS	TOTAL
		BUS	MED	HVY	4+	4-	5	6+	5-	6	7+				
NORTH APPROACH THIS LEG NORTH	832	1	28	5		9	1	9				53	5.99	100.00	885
NORTH TO SOUTH															
NORTH TO EAST															
NORTH TO WEST															
SOUTH APPROACH THIS LEG SOUTH	656	1	32	5	2	7	3	5				54	7.61	100.00	710
SOUTH TO NORTH															
SOUTH TO EAST															
SOUTH TO WEST															
EAST APPROACH EAST TO NORTH															
EAST TO SOUTH															
THIS LEG EAST															
EAST TO WEST															
WEST APPROACH WEST TO NORTH															
WEST TO SOUTH															
WEST TO EAST															
THIS LEG WEST															
NORTH TOTAL PERCENTAGE	1488	1	60	10	2	16	4	14				107		55/45	1595
SOUTH TOTAL PERCENTAGE	1488	1	60	10	2	16	4	14				107		45/55	1595
EAST TOTAL PERCENTAGE	93.29	0.06	3.76	0.63	0.13	1.00	0.25	0.88				6.71			
WEST TOTAL PERCENTAGE	93.29	0.06	3.76	0.63	0.13	1.00	0.25	0.88				6.71			

PCT SPLIT
 OUT/IN
 1595

3190

STATE OF WASHINGTON - DEPARTMENT OF TRANSPORTATION
 T R I P S S Y S T E M
 SHORT DURATION CLASSIFICATION 4-WAY

DATE: 09/12/2008
 TIME: 11:27:25
 PAGE: 6

SR 500 MP 005.98 OFF SYS ID COUNTER NUM 07843 COUNT ID HPMS
 DATE 08/28/2008 DAY OF WEEK 5 TIME PERIOD HOUR 07:15 - 08:15
 LOCATION SR 500 N/O NE 4TH PLAIN RD 04

NORTH LEG PEAK HOUR AND VOLUMES

MOVEMENT	CARS AND PICKUPS	----SINGLE UNITS----			-DOUBLE UNITS-			-TRIPLE UNITS-			TOTAL TRUCK	PERCENT TRUCK	PERCENT TURNS	TOTAL
		BUS	MED	HVY	4+	4-	5	6+	5-	6				

NORTH APPROACH														
THIS LEG NORTH	1008		37	8	1		11	5	11				1	74
NORTH TO SOUTH														
NORTH TO EAST														
NORTH TO WEST														
TOTAL														74
PERCENT TRUCK														6.84
PERCENT TURNS														100.00
TOTAL														1082

SOUTH APPROACH														
SOUTH TO NORTH	614		1	24	7		6	5	4					47
THIS LEG SOUTH														
SOUTH TO EAST														
SOUTH TO WEST														
TOTAL														47
PERCENT TRUCK														7.11
PERCENT TURNS														100.00
TOTAL														661

EAST APPROACH
 EAST TO NORTH
 EAST TO SOUTH
 THIS LEG EAST
 EAST TO WEST

WEST APPROACH
 WEST TO NORTH
 WEST TO SOUTH
 WEST TO EAST
 THIS LEG WEST

PCT SPLIT
 OUT/IN 1743

NORTH TOTAL	1622	1	61	15	1	17	10	15		1	121		62/38	1743
PERCENTAGE	93.06	0.06	3.50	0.86	0.06	0.98	0.57	0.86		0.06	6.94			
SOUTH TOTAL	1622	1	61	15	1	17	10	15		1	121		38/62	1743
PERCENTAGE	93.06	0.06	3.50	0.86	0.06	0.98	0.57	0.86		0.06	6.94			

EAST TOTAL
 PERCENTAGE
 WEST TOTAL
 PERCENTAGE

3486

SR 500 MP 005.98 OFF SYS ID COUNTER NUM 07843 COUNT ID HPMS
 DATE 08/28/2008 DAY OF WEEK 5 TIME PERIOD HOUR 07:15 - 08:15
 LOCATION SR 500 N/O NE 4TH PLAIN RD 04

SOUTH LEG PEAK HOUR AND VOLUMES

MOVEMENT	CARS AND PICKUPS	---SINGLE UNITS---				-DOUBLE UNITS-			TOTAL TRUCK	PERCENT TRUCK	PERCENT TURNS	TOTAL
		BUS	MED	HVY	4+	4-	5	6+				
NORTH APPROACH	1008		37	8	1	11	5	11	74	6.84	100.00	1082
THIS LEG NORTH												
NORTH TO SOUTH												
NORTH TO EAST												
NORTH TO WEST												
SOUTH APPROACH	614		1	24	7	6	5	4	47	7.11	100.00	661
SOUTH TO NORTH												
THIS LEG SOUTH												
SOUTH TO EAST												
SOUTH TO WEST												

EAST APPROACH
 EAST TO NORTH
 EAST TO SOUTH
 THIS LEG EAST
 EAST TO WEST

WEST APPROACH
 WEST TO NORTH
 WEST TO SOUTH
 WEST TO EAST
 THIS LEG WEST

		1	61	15	1	17	10	15	1	121		62/38	1743
NORTH TOTAL PERCENTAGE	93.06	0.06	3.50	0.86	0.06	0.98	0.57	0.86	0.06	6.94		38/62	1743
SOUTH TOTAL PERCENTAGE	93.06	0.06	3.50	0.86	0.06	0.98	0.57	0.86	0.06	6.94			

EAST TOTAL PERCENTAGE
 WEST TOTAL PERCENTAGE

PCT SPLIT OUT/IN 1743

SR 500 MP 005.98 OFF SYS ID COUNTER NUM 07843 COUNT ID HPMS
 DATE 08/28/2008 DAY OF WEEK 5 TIME PERIOD HOUR 07:15 - 08:15
 LOCATION SR 500 N/O NE 4TH PLAIN RD 04

INTERSECTIONAL PEAK HOUR AND VOLUMES

MOVEMENT CARS AND PICKUPS BUS MED HWY 4+ -SINGLE UNITS----- -DOUBLE UNITS- 4- 5 6+ -TRIPLE UNITS- 5- 6 7+ TOTAL TRUCK PERCENT TRUCK PERCENT TURNS TOTAL

NORTH APPROACH THIS LEG NORTH NORTH TO SOUTH NORTH TO EAST NORTH TO WEST 1008 37 8 1 11 5 11 1 74 6.84 100.00 1082

SOUTH APPROACH SOUTH TO NORTH THIS LEG SOUTH SOUTH TO EAST SOUTH TO WEST 614 1 24 7 6 5 4 47 7.11 100.00 661

EAST APPROACH EAST TO NORTH EAST TO SOUTH THIS LEG EAST EAST TO WEST WEST APPROACH WEST TO NORTH WEST TO SOUTH WEST TO EAST THIS LEG WEST

NORTH TOTAL 1622 1 61 15 1 17 10 15 1 121 62/38 1743
 PERCENTAGE 93.06 0.06 3.50 0.86 0.06 0.98 0.57 0.86 0.06 6.94
 SOUTH TOTAL 1622 1 61 15 1 17 10 15 1 121 38/62 1743
 PERCENTAGE 93.06 0.06 3.50 0.86 0.06 0.98 0.57 0.86 0.06 6.94

EAST TOTAL PERCENTAGE WEST TOTAL PERCENTAGE

TRUCK PERCENTAGE: LEGS NORTH TOTAL 78 4.48 42 2.41 TRAIN 1 0.06 TRUCK 121 6.94 AXLE FACTOR 0.9598
 SOUTH TOTAL 78 4.48 42 2.41 TRAIN 1 0.06 TRUCK 121 6.94 AXLE FACTOR 0.9598
 EAST TOTAL WEST TOTAL

PEAK HOUR FACTOR 0.956 456 427 436 424 1743

PCT SPLIT OUT/IN 1743

3486



Vehicle Volume Summary
(Block Diagram)

Date: 08/28/2008
Time Period: 07:15 - 08:15

SR: 500

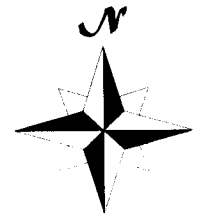
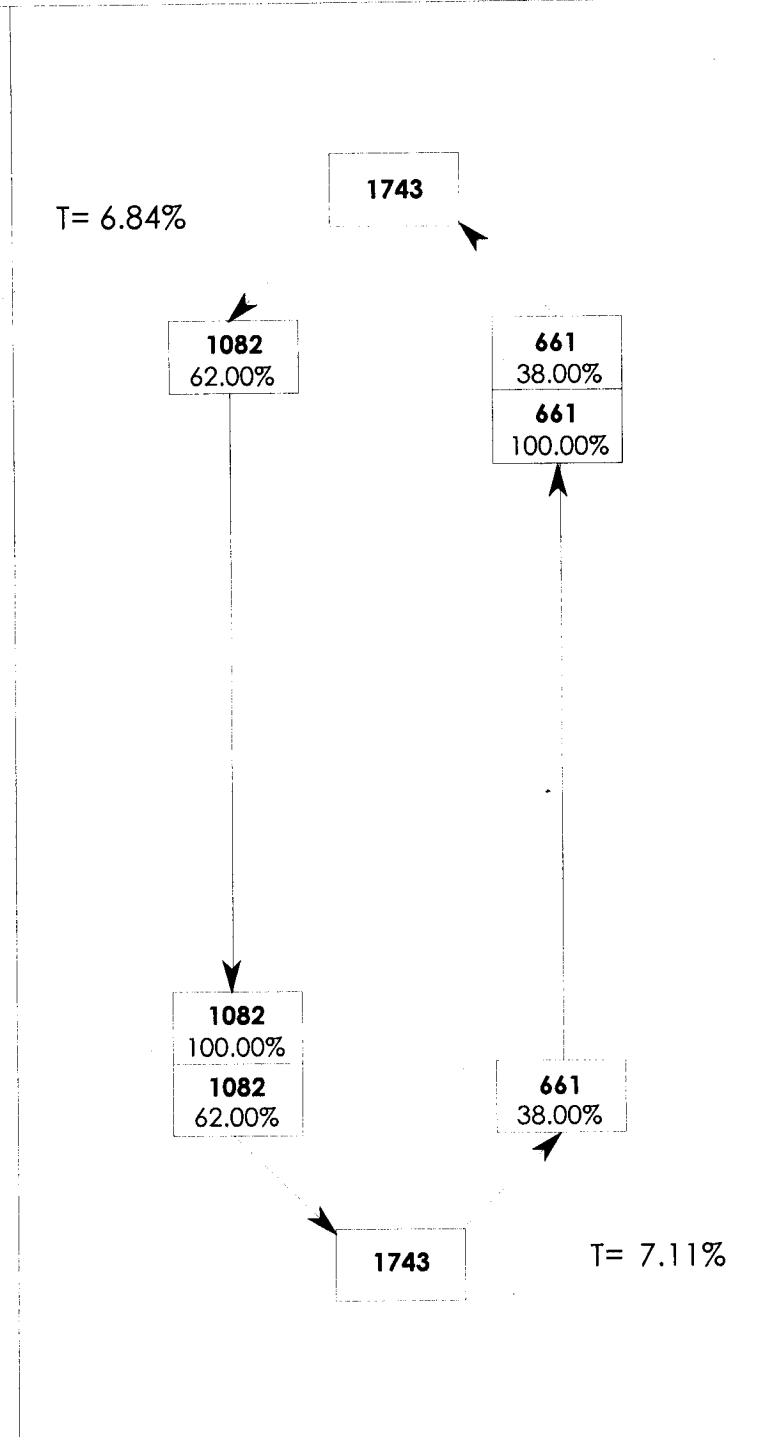
MP: 005.98

Off Sys. ID:

Count ID: HPMS

Location: SR 500 N/O NE 4TH PLAIN RD

INTERSECTIONAL PEAK HOUR AND VOLUMES



Quarter Hour 1 = 456
Quarter Hour 2 = 427
Quarter Hour 3 = 436
Quarter Hour 4 = 424
TOTAL HOUR = 1743

PEAK HOUR FACTOR = 0.956



Vehicle Volume Summary
(Block Diagram)

Date: 08/28/2008
Time Period: 06:00 - 10:00

SR: 500

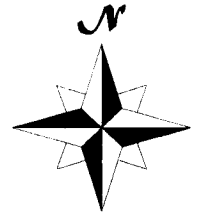
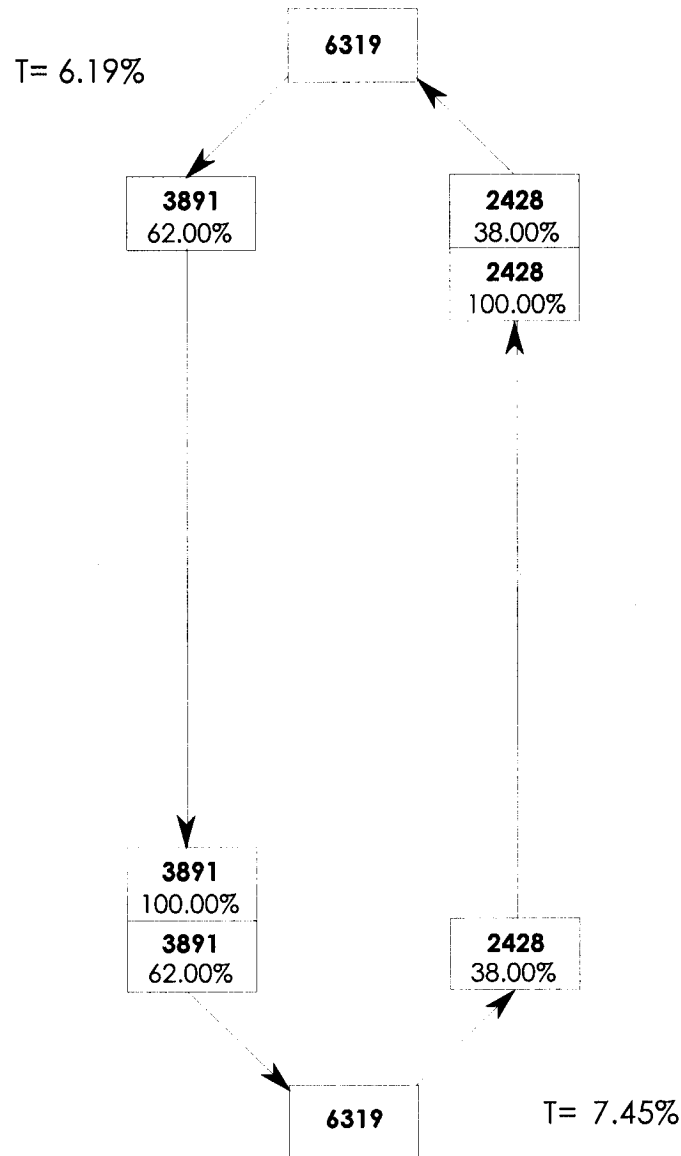
MP: 005.98

Off Sys. ID:

Count ID: HPMS

Location: SR 500 N/O NE 4TH PLAIN RD

ENTIRE COUNT VOLUMES





Washington State
Department of Transportation

3100
183

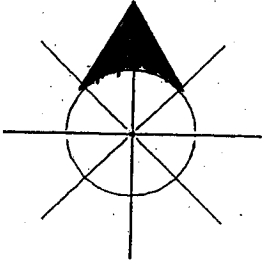
Traffic Station Sketch

04 = SW CLARK Co. FC12
LEG 2 (SB-NB) 0.9000

SR# 500 MP 5.98 OSID _____ COUNT ID HPMS DATE 8-26-08
8-27-08
8-28-08

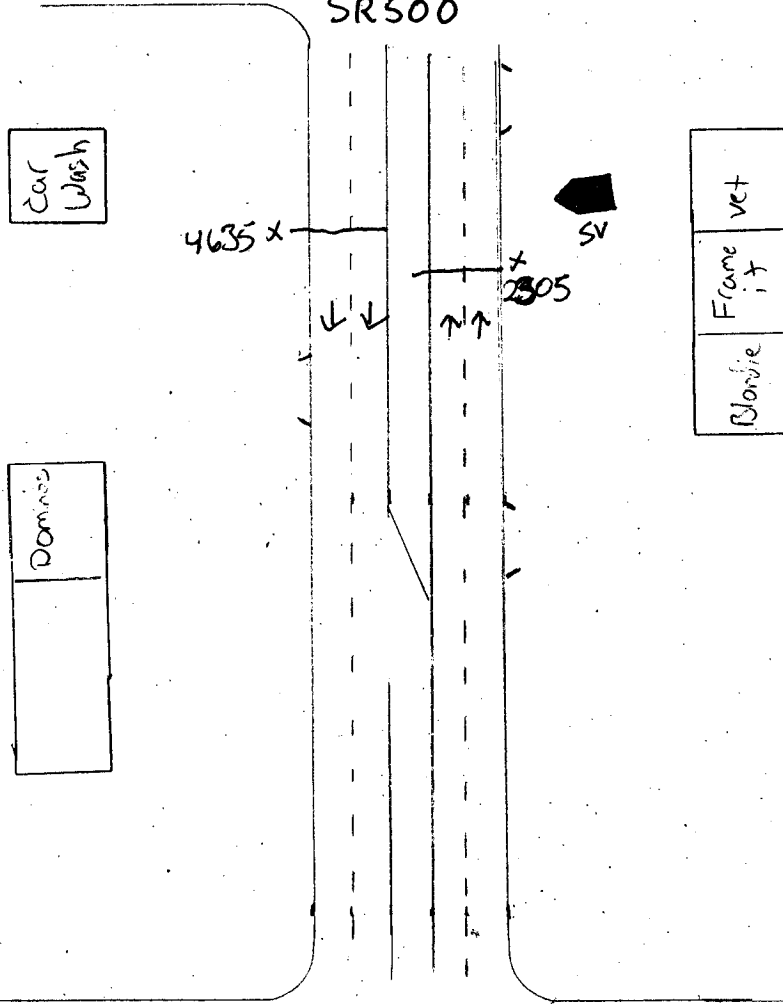
STATION LOCATION on SR-500 N/O Fourth Plain Rd

SR 500 N/O NE 4TH PLAIN RD



INDICATE NORTH

Sketch
SR500



Fourth Plain Rd

REMARKS _____

G:\HPMS 72.TXT 14-1800 # MO 7841 8/26/08

G:\HPMS 73.TXT 10-1400 # MO 7842 8/27/08

J. Mydler / R. Traupe

SIGNATURE

G:\HPMS 74.TXT 06-1000 # MO 7843 8/28/08